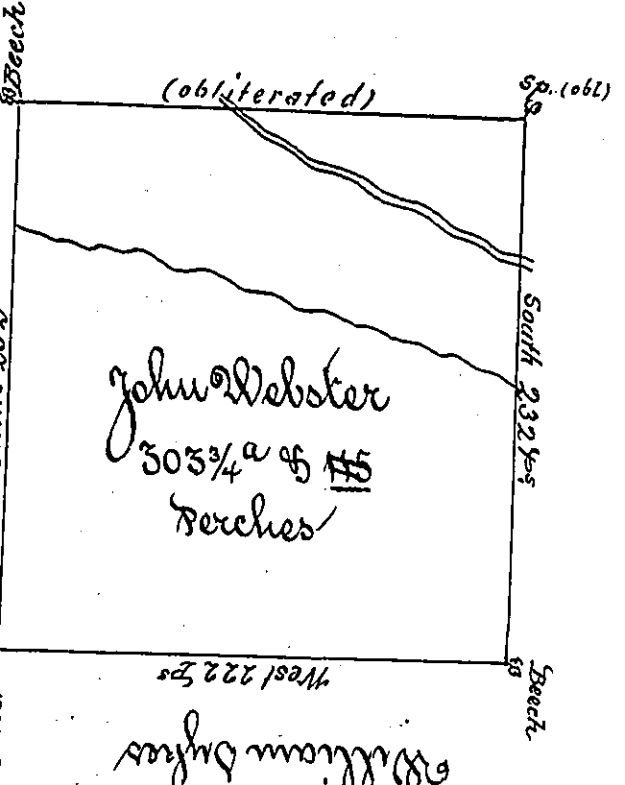


C. 50-171

John Eldridge



C. 19. 64

Daniel Bettle

C. 210-59

A Draught of a Tract of Land Situated in Bedford County adjoining land of John Eldridge & surveyed the 20th day of Oct. 1786 Containing Three hundred and Three acres & 115¹/₂ in Pursuance of a Warrant Dated 30th day of July 1776

John Coukens Esq. S.G.

Wt 96.66

George Woods

D.S.

IN TESTIMONY that the above is a copy of the original remaining on file in the Department of Internal Affairs of Pennsylvania, made conformably to an Act of Assembly approved the 16th day of February, 1833, I have hereunto set my Hand and caused the Seal of said Department to be affixed at Harrisburg, this seventh day of November 1899.



James W. Latta
Secretary of Internal Affairs.